

Board of Trustees Meeting

June 5, 2026



Sponsored Research Awards Highlights

February

Principal Investigator and Department	Sponsor	Grant Title	Total Project Award Amount
Jianing Li College of Pharmacy – Medicinal Chemistry and Molecular Pharmacology	Public Health Service-National Institutes of Health-National Institute on Aging	Generative Peptide Drug Design for AD/ADRD	\$6,319,054
Stephanie Leigh Olson College of Science – Earth, Atmospheric, and Planetary Sciences	NASA	Probing Origin of Life Possibilities, Atmospheric Redox & Terrestrial Environment Evolution	\$4,218,897
Ekramy Sayedahmed College of Veterinary Medicine – Comparative Pathobiology	Animal and Plant Health Inspection Service	Fogging the Threat: A Novel Therapeutic Approach To Suppress Highly Pathogenic Avian Influenza Transmission in Poultry Facilities	\$2,000,000
Gregory Scofield PARI Hypersonics Lab – Hypersonics Advanced Manufacturing Technology Center	Arctos Technology Solutions LLC / Air Force Research Laboratory	PARI Hypersonics Lab ARCTOS HEX – Additively Manufactured Materials for Heat Exchangers	\$1,156,947
Yuan Yao College of Agriculture – Food Science	Animal and Plant Health Inspection Service	Aerosolized Soluble Niclosamide for Control of Highly Pathogenic Avian Influenza	\$2,000,000

Sponsored Research Awards Highlights

March

Principal Investigator and Department	Sponsor	Grant Title	Total Project Award Amount
Ayman Habib College of Engineering — Civil and Construction Engineering	National Science Foundation	Fire-Wildlife Urban Interface: Community Resilience Assessment Framework Against WUI Fires Using Multi-Resolution Digital Twins	\$2,491,133
Jason Hanna College of Science — Biological Sciences	Public Health Service-National Institutes of Health-National Cancer Institute	Dissecting the Role of Tumor Suppressing MicroRNAs in Angiosarcoma	\$2,188,270
Kyle Gerald Horton College of Agriculture — Forestry and Natural Resources	National Science Foundation	Collaborative Research: GCR: Can improved ecological forecasting accelerate sustainability transformation in urban lighting?	\$1,547,064
Nicole Key College of Engineering — Mechanical Engineering	Pratt & Whitney Group	Experimental Research on Centrifugal Compressor for Auxiliary Power Unit Application	\$992,790
Ceridwyn Ann King College of Health and Human Sciences — Hospitality and Tourism Management	Dean and Barbara White Family Foundation	Dean and Barbara White Family Foundation Grant PI King	\$10,200,000
Neil Knobloch College of Agriculture — Agriculture Administration	National Science Foundation	Developing and Testing Innovations (DTI): Interdisciplinary iNcubation STEM design challenges through community Engagement with academic and industry Professionals (IN-STEP)	\$1,300,000
Romit Maulik College of Engineering — Mechanical Engineering	University of Southern California / U.S. Army Research Office	Multidisciplinary University Research Initiative program: Probabilistic Multiscale Inference of Interface Models Under Extreme Conditions	\$1,405,000

Sponsored Research Awards Highlights

March

Principal Investigator and Department	Sponsor	Grant Title	Total Project Award Amount
Steven Pekarek College of Engineering – Electrical and Computer Engineering	Continuous Solutions / Naval Sea Systems Command	Medium Voltage Common Mode Mitigation	\$4,080,622
Dimitrios Peroulis College of Engineering – Electrical and Computer Engineering	American University of the Middle East	American University of the Middle East Center for Research & Innovation	\$1,000,000
Gregory Scofield PARI Hypersonics Lab – Lab Operating	Lockheed Martin Corp.	PARI Hypersonics Lab Fast Launch and Advancement for Scalable Hypersonics	\$1,249,990

Sponsored Research Awards Highlights

April

Principal Investigator and Department	Sponsor	Grant Title	Total Project Award Amount
Stephen Beaudoin College of Engineering — Chemical Engineering	Energetics Technology Center / Naval Surface Warfare Center Indian Head Division	CAMEO (Capability for Advanced Modular Energetics Operations)	\$3,313,170
Kyle Aaron Cottrell College of Agriculture — Biochemistry	Public Health Service-National Institutes of Health-National Institute of General Medical Sciences	Systematic evaluation of competition between dsRNA binding proteins	\$2,060,178
Daniel Guildenbecher College of Engineering — Mechanical Engineering	University of Florida / National Nuclear Security Administration	Center for Multiscale Modeling of Multiphase Combustion	\$1,025,000
Krishna Jayant College of Engineering — Biomedical Engineering	U.S. Army — Army Contracting Command-Aberdeen Proving Ground Research Triangle Park Division	Unraveling Impacts of High-Frequency RF Exposure on Neural Dynamics, Cognition and Perception	\$1,867,281
Andreas Jung College of Science — Physics and Astronomy	Fermi National Accelerator Laboratory / U.S. Department of Energy	High Luminosity (HL) LHC CMS Detector Upgrade Project Outer Tracker	\$2,029,571
Scott Meyer College of Engineering — Zucrow Lab General Operations	General Electric Company	Design, Procure, Fabricate, Install, and Activate the Equipment and Systems Required To Test Small Gas Turbine Engines at Controlled Altitude Testing Conditions in ZL9	\$2,765,940
Joel Rasmus Centers and Institutes — Center for Education and Research in Information Assurance and Security	Global Affairs Canada	Digital Defense for Nuclear Infrastructure in Southeast (C2RS-LATAM)	\$994,740

Sponsored Research Awards Highlights

April

Principal Investigator and Department	Sponsor	Grant Title	Total Project Award Amount
Madduri Srinivasarao College of Science – Chemistry	Low Institute for Therapeutics	Discovery and Optimization of Novel Targets and Therapeutic Agents	\$2,000,000
Joshua Widhalm College of Agriculture – Horticulture and Landscape Architecture	Systems & Technology Research / Defense Advanced Research Projects Agency	Using Vegetation as a Predictive Platform for Chemical Surveillance	\$2,128,484

Sponsored Research Awards Highlights

May

Principal Investigator and Department	Sponsor	Grant Title	Total Project Award Amount
Arielle Borovsky College of Health and Human Sciences – Speech, Language, and Hearing Sciences	Public Health Service-National Institutes of Health-National Institute on Deafness and Other Communication Disorders	Lexico-Semantic Abilities in Early Language Growth and Delay	\$2,272,679
Daniel Flaherty College of Pharmacy – Medicinal Chemistry and Molecular Pharmacology	Trudeau Institute / Public Health Service-National Institutes of Health-National Institute of Allergy and Infectious Disease	Optimization of Antitubercular Compounds Against a Novel Mycobacterium Tuberculosis Target, aspC	\$1,774,390
Luis Javier Gomez College of Engineering – Electrical and Computer Engineering	U.S. Army Research Laboratory	Mechanisms of Electromagnetic Effects on Individual Neurons	\$1,843,946
Ahmed Hassanein College of Engineering – Nuclear Engineering	U.S. Department of Energy	Pushing Performance Limits of Plasma Facing Materials for Next-Generation Nuclear Fusion Reactors	\$1,080,811
Chi Hwan Lee College of Engineering – Biomedical Engineering	Indiana University / Public Health Service-National Institutes of Health-National Institute on Deafness and Other Communication Disorders	Respiratory and Real-Time Laryngeal Dynamics in Exercise-Induced Paradoxical Vocal Fold Motion	\$998,020

Resolutions of Appreciation

Robert Buckman and Joyce Mollerup College of Engineering	\$1.5M
Julie and John Dussliere Intercollegiate Athletics	\$1.25M
Michael and Mary King Intercollegiate Athletics	\$1.25M
Marvin House Purdue Fort Wayne	\$1M
John and Brittany Moser College of Engineering	\$1M
Richard and Julie Penington College of Engineering	\$1M

Resolutions of Appreciation

Anonymous College of Veterinary Medicine	\$3M
Anonymous Intercollegiate Athletics	\$2.5M
Anonymous College of Engineering	\$1.026M
Anonymous College of Engineering	\$1M

Naming

Request to name the Pickett-Chaney Pickleball & Tennis Complex within the Recreation & Wellness program

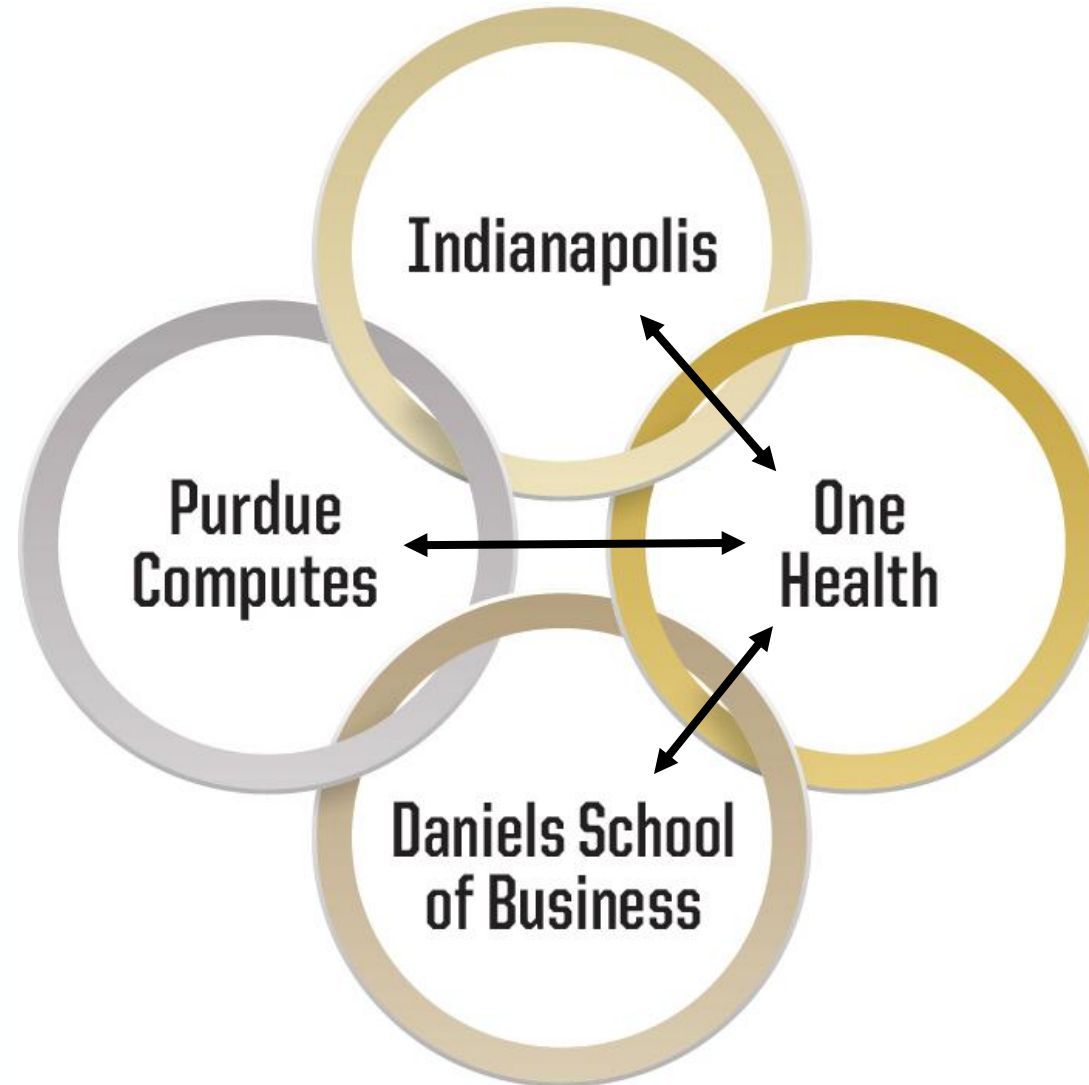
- Donors are Martin and Janice Pickett and Jean Anne Darr Chaney and James Chaney



One Health



Strategic Pillars



Lilly-Purdue 360 Partnership

- Celebrated one year since signing of \$250M partnership: **largest U.S. industry-academic partnership of its kind**
- Secured \$24M in first-year funding, administered through Eli Lilly and Company and Purdue University Research Alliance Center
- Spans the full pharmaceutical pipeline from molecule discovery to patient delivery
- Launched six individual programs in 2026 targeting Lilly's core pillars: drug discovery, product R&D, manufacturing, and talent development
- Accelerated talent growth in 2026:
 - Graduate students and postdocs: 80 to 100+
 - Undergraduates: 176 to 225+



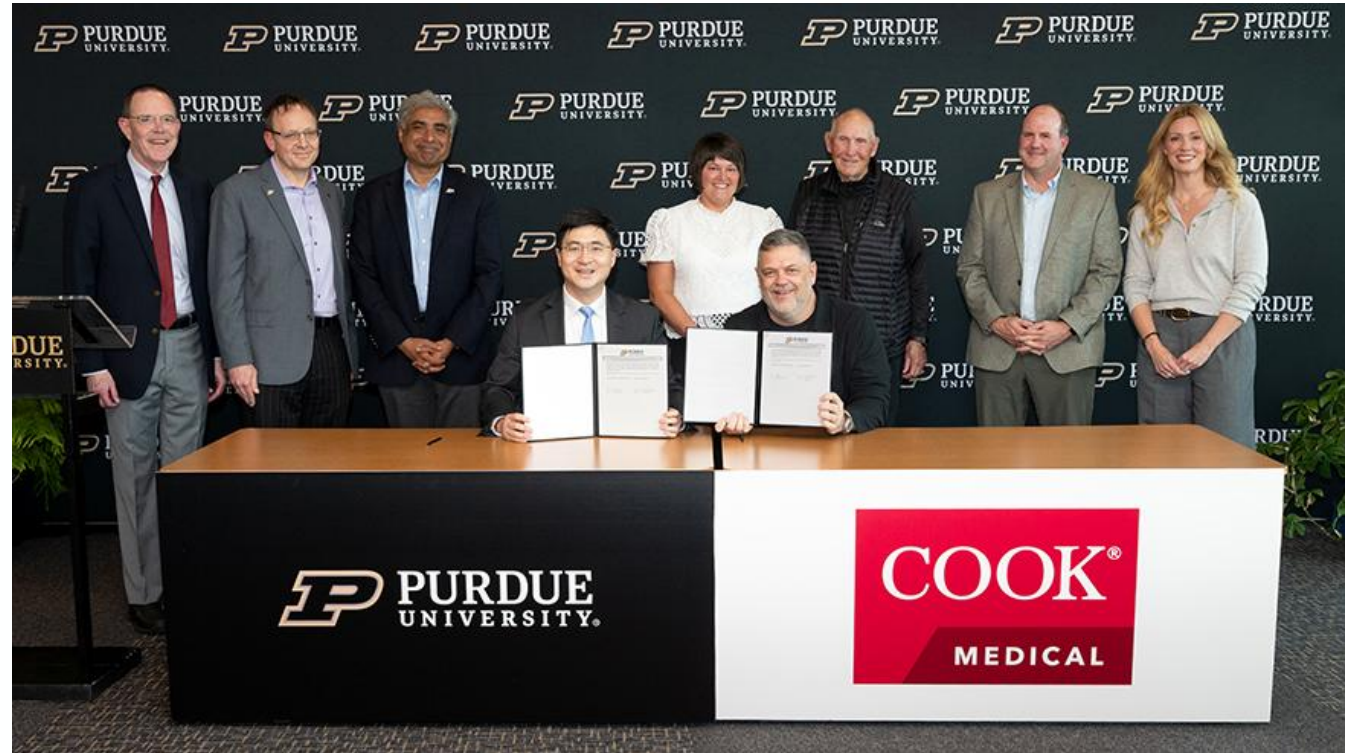
Crossroads Academic Medical Institute

- Formation announced with Gov. Braun on May 19
- Statewide initiative between **Purdue, Marian University and seven health systems** to expand healthcare access, stimulate workforce development and improve overall health outcomes
- Collaboration aims to improve:
 - Critical shortage of health professionals throughout Indiana (71 of 92 counties are designated Health Professional Shortage Areas)
 - Expand clinical training opportunities for Purdue students
 - Drive innovation by leveraging Purdue's AAU research infrastructure to expand clinical/translational research
- Targets rural retention through community immersion and residency programs in underserved areas (connects clinical training to talent pool growth)



Research Agreements, Awards and Faculty Recruitment

- This year we added master research agreements with:
 - Cook Medical
 - Evonik
 - IU Health
- Total research awards: **Up 8%**, including more than \$100M from HHS and USDA
- Faculty cluster hires (18):
 - Integrated Health: 8 hires
 - AI-Driven Biomolecular Design: 7 hires
 - Advanced Chemistry: 3 hires



New Institutes

- William D. and Sherry L. Young Institute for the Advanced Manufacturing of Pharmaceuticals
- Low Institute for Therapeutics
- Lilly Purdue Innovation Institute
- Purdue Institute for Healthcare Systems Innovation
- And other longtime institutes!



New Facilities

- **Nursing and Pharmacy Education Building**
 - ~185,000 GSF facility constructed to serve as new home for the School of Nursing and College of Pharmacy
 - General-use classrooms, clinical instruction spaces, animal research space, study spaces, offices and common areas
 - Occupancy date: December 2026
- **Northwest Indianapolis Research Building**
 - Purchase of 80,000 GSF two-story building with ~50,000 SF of lab and lab service space, 30,000 SF of office space, 18 biotech research labs with hoods and benches, six walk-in cold storage units, darkrooms, autoclave rooms and utility infrastructure
 - Purdue Research Foundation to purchase in June 2026
- **Hansen Life Sciences Research Building**
 - Renovation of 106,000 GSF building to modernize infrastructure and deliver flexible laboratory and research environments with emphasis on chemistry, biochemistry and related disciplines
 - ~40-month construction time frame
- **Indianapolis One Health Innovation District (with Elanco)**
- **Training facilities**



Nursing and Pharmacy Education Building – May 2026

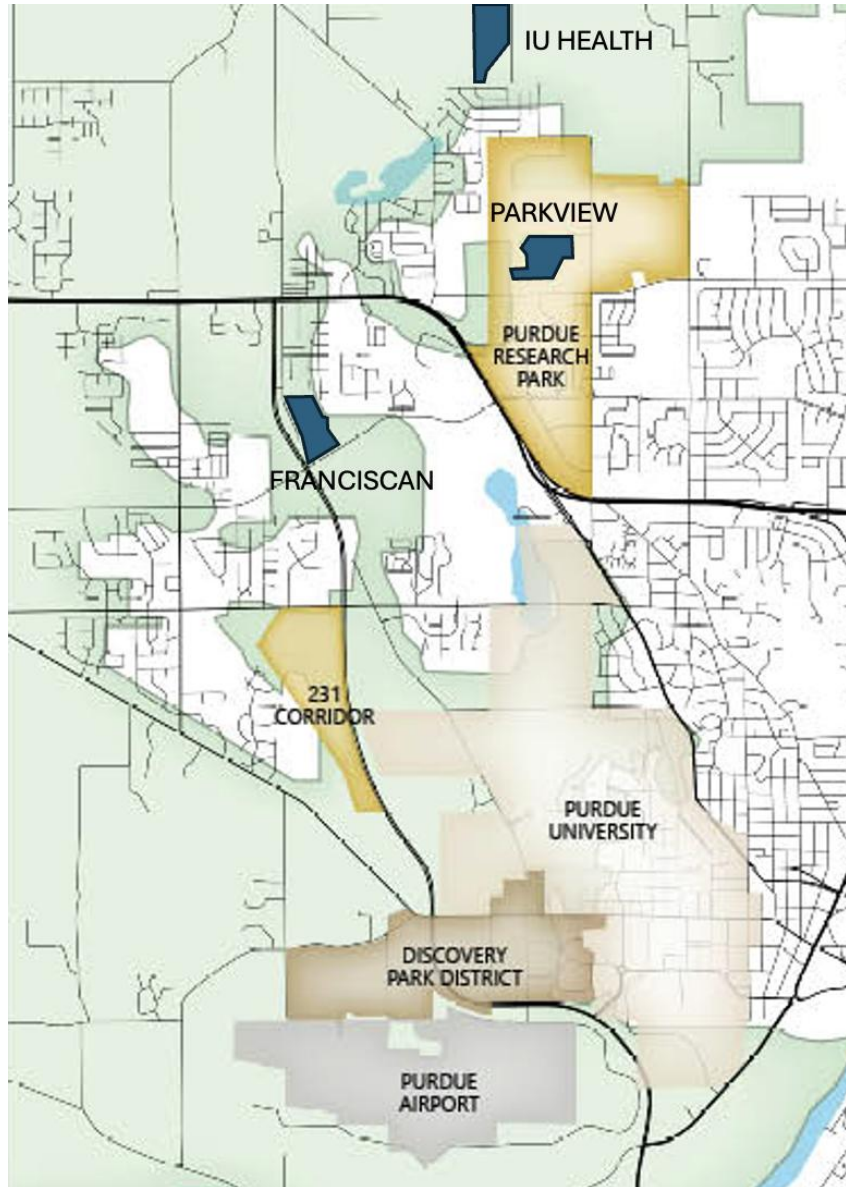


Northwest Indianapolis Research Building



Hansen Life Sciences Research Building renovation

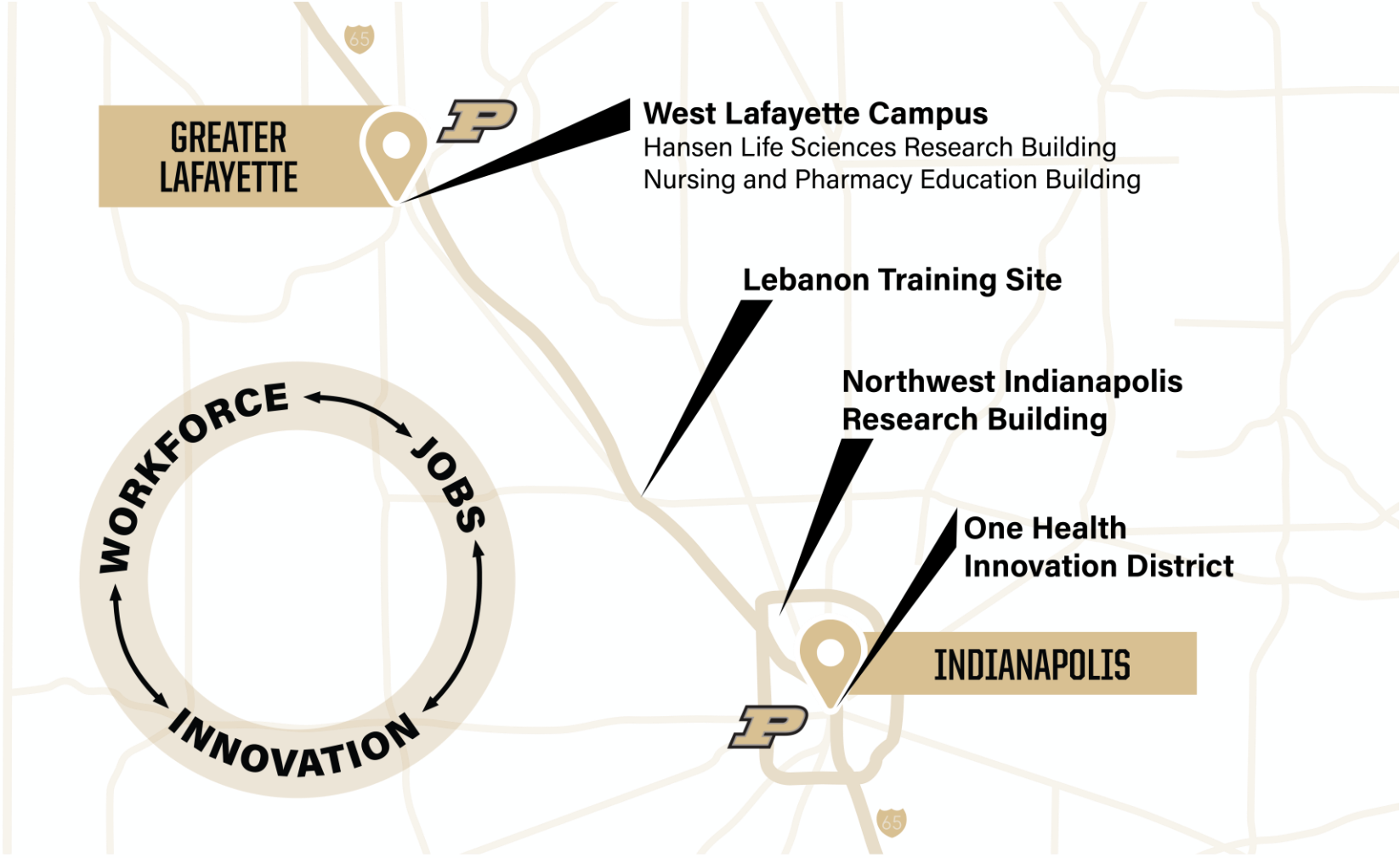
New West Lafayette Hospitals



Indiana University Health



America's Hard Tech Corridor (One Health Portion)



Thank You

